

# School Newsletter



Naburn Church of England  
Primary School



Newsletter : 92 09.01.26

## Headteacher's Introduction

Dear Parents/Carers,

Welcome back! It has been truly wonderful to see the children return so happily and excited to learn! I do hope you all had a lovely Christmas break (although it may seem like it was an age away now!) The children and teachers have been hard at work already, learning about space and significant people in Acorn Class (complete with a space rocket landing!) and exploring the Victorian era of smog, slums and street children, for our older pupils. Please have a look on our website for the Spring Term Class Newsletters, for an overview of the term's activities. If your paper copies didn't quite make it home, you will also find homework expectations and menus, on our class pages!

As you may be aware, the Department for Education (DfE) has implemented a comprehensive strategy to raise school attendance rates in England. These efforts are part of a broader strategy to improve educational outcomes for all children in England. By working in partnership, we can give every child the best chance to succeed, both now and in the future, by ensuring they have the consistent learning, social connections, and confidence that come from regular attendance. We truly appreciate your ongoing commitment, understanding, and effort in making attendance a top priority for your child's education and wellbeing. To support you and raise awareness of how much attendance matters, we will be sending a letter to you, to inform you of your child(ren)s attendance so far this year. For more information, please see our Attendance Policy on our website: [www.naburnschool.com](http://www.naburnschool.com)

Warm wishes,  
Mrs Durham.

## THINGS TO REMEMBER

- CLUBS START NEXT WEEK
- Please remember to send hats gloves and coats during this cold weather



Battle winners are

RESPECT

Most Valueable players

Martha Georgie

Next Weeks Battle

ASPIRATION/RESPECT

## Reflection Corner

Philippians 2:3

"Let nothing be done through strife or vainglory; but in lowliness of mind let each esteem other better than themselves."



# School Newsletter



## Dates for your diary

w/c 12 <sup>th</sup> January	Clubs Start
10 <sup>th</sup> February	Young Voices at Sheffield Arena
13 <sup>th</sup> February	Break up for half term
23 <sup>rd</sup> February	Back to School
26 <sup>th</sup> March	Easter Service – 2pm in Church
26 <sup>th</sup> March	Break up for Easter holidays
13 <sup>th</sup> April	Back to school
4 <sup>th</sup> May	Bank Holiday Monday
22 <sup>nd</sup> May	Break up for half term
1 <sup>st</sup> June	Back to school
17 <sup>th</sup> July	Leavers Service – 2pm in Church
17 <sup>th</sup> July	Break up for Summer



Aspiration Respo

### Nut Free

Just a reminder that we are a nut free school, it is **REALLY** important that no nuts are brought into school – this includes products that contain nuts and products that "may contain traces of nuts"

## celebration assembly

JUST A REMINDER THAT WE HOLD OUR CELEBRATION ASSEMBLY EVERY THURSDAY AFTERNOON AT 2.50PM

ALL PARENTS/CARERS WELCOME – WE'D LOVE TO SEE YOU THERE

## 2026 Events

<b>MARCH 30</b> MONDAY 10-NOON & 1PM - 3PM <b>Forest School</b> Bondgate Woodland	<b>APRIL 6</b> MONDAY 9 AM - 3 PM <b>Easter Bank Holiday Market</b> Selby Town Centre	<b>MAY 4</b> MONDAY 9 AM - 3 PM <b>May Bank Holiday Market</b> Selby Town Centre	<b>MAY 25</b> MONDAY 9 AM - 3 PM <b>Spring Bank Holiday Market</b> Selby Town Centre
<b>MAY 29</b> FRIDAY 12 PM - 3 PM <b>Picnic in the Park</b> Selby Park	<b>JUNE 12</b> FRIDAY 4 PM - 8 PM <b>Twilight Market</b> Market Place	<b>JUNE 28</b> SUNDAY NOON - 6 PM <b>Selby Family Funday</b> Selby Town Centre	<b>JULY 18</b> SATURDAY 10 AM - 3 PM <b>Food, Drink &amp; Craft Festival</b> Market Place
<b>AUG 1</b> SATURDAY 4 PM - 11 PM <b>Beer Festival</b> Selby Town Hall	<b>AUG 3</b> MONDAY 10AM - 12PM & 1PM - 3PM <b>Forest School</b> Bondgate Woodland	<b>AUG 31</b> MONDAY 9 AM - 3 PM <b>Summer Bank Holiday Market</b> Selby Town Centre	<b>OCT 17</b> SATURDAY 10 AM - 3 PM <b>Oktoberfest</b> Market Place
<b>OCT 31</b> SATURDAY 6 PM - 9 PM <b>Bonfire &amp; Firework Display</b> Community Land	<b>NOV 8</b> SUNDAY 10 AM <b>Remembrance Service</b> Selby Abbey	<b>NOV 11</b> WEDNESDAY 10-45 AM <b>Remembrance Service</b> Selby Cemetery	<b>NOV 28</b> SATURDAY 10 AM - 5 PM <b>Christmas Market &amp; Light Switch on</b> Selby Town Centre

**WEEKLY MONDAY MARKET**  
EVERY MONDAY, MARKET PL 9AM - 3PM

**MONTHLY FARMERS MARKET**  
EVERY THIRD SATURDAY, MARKET PL 9AM - 2PM

For more information please contact  
01757 708449  
e.webb@selbytowncouncil.gov.uk

### Announcement from

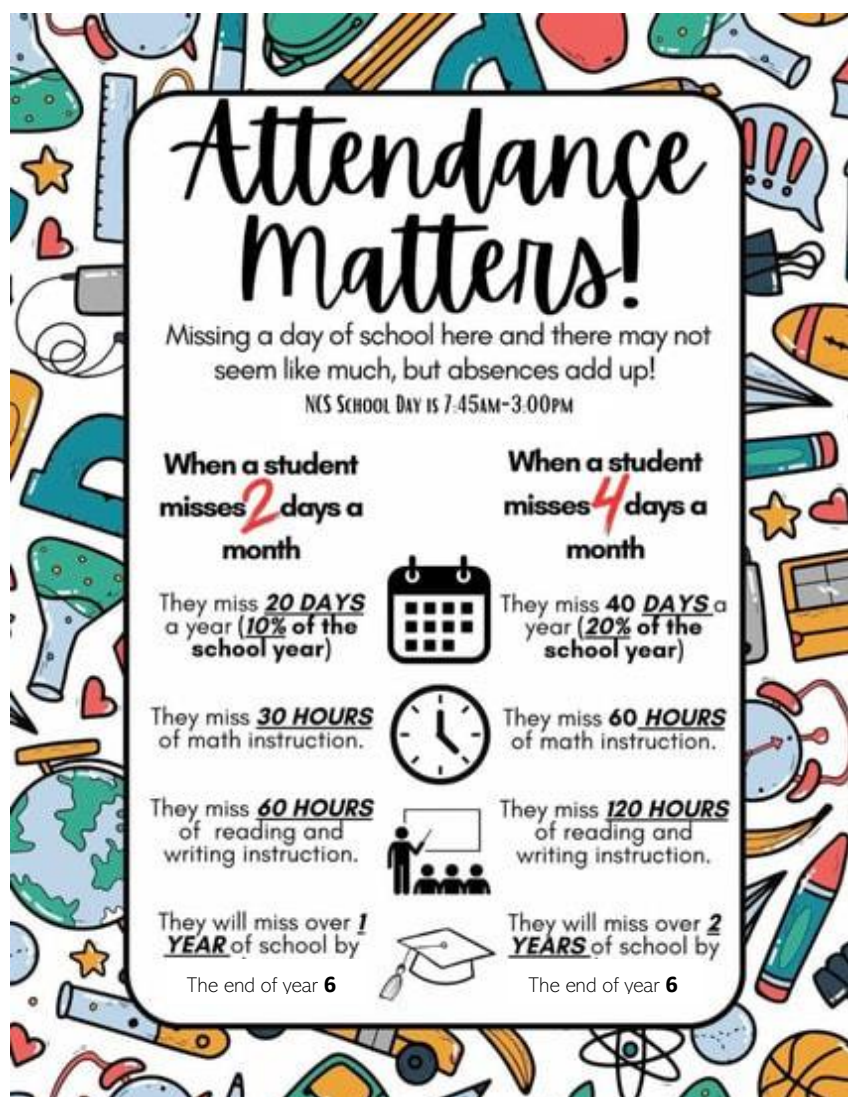


**'What I wish my parents or carers knew...': A guide for parents and carers on managing children's digital lives**

18 December 2025

Follow the link for more info [What I wish my parents or carers knew: A guide for parents on managing children's digital lives.](#)

# School Newsletter



## Absence Reporting

Please can we remind parents and carers that all absences must be reported daily to the school office before 8:50am, giving a clear reason for absence.

A message can be left on the school answerphone at any time. For cases of ongoing illness you must contact the school every day, otherwise this could be recorded as unauthorised absence.

Any unavoidable medical appointments, e.g. hospital appointments, must be reported to the school office in advance, and a form completed.

Any requests for other time off during term time will be recorded as unauthorised absence, unless there are exceptional circumstances. A form must also be completed in advance for all term time absences.



# School Newsletter



Acorn Class



## Our Classroom Rocket Adventure!

When we came back to school after the holidays, we walked into a HUGE surprise...

A **red rocket covered in stars** had crash-landed **right in our classroom!**

While we were away, the police had visited to make sure everything was safe. They put blue and white **POLICE DO NOT CROSS** tape all around the rocket. It made our classroom look like a real investigation scene.

The children became **detectives** and started searching the classroom to see if they could find any more clues.

Here's what they discovered:

- A puddle of **pink milk** on the floor
- A bowl of **green stew** that looked very strange
- **Unusual footprints** that didn't belong to any child or teacher
- A plate with **brown bread** sitting neatly beside the rocket
- And of course... the bright red, star-covered **mysterious rocket**

The children shared ideas, asked questions, and worked together to think about what might have happened.

Was it an alien visitor? A space explorer? Someone who stopped for a snack and left in a hurry?

We don't know the answer yet - but we *do* know our class is full of brilliant investigators who are ready for the next clue.

More discoveries coming soon...



# School Newsletter



In Maths, we have been working out the area of 2D rectilinear shapes. In English, we watched a film narrative called 'Broken' as a stimulus for creative writing.

Our clay candle holders - linked to the Blitz Blackouts - had the chance to dry out over the holidays and the children were excited to paint, decorate and finish them this week!

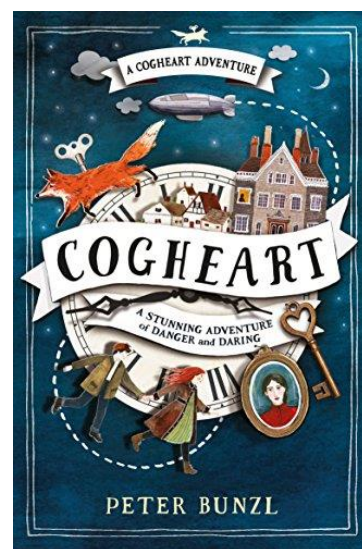




# School Newsletter



Sycamore have made a fantastic start back this week. We have started our class novel Cogheart, a Victorian steampunk adventure and have got a new classmate: the mechanical fox, Malkin. The children have been learning about the rules of punctuating dialogue and have created short passages of dialogue balanced with description and action, based on the first chapter of Cogheart.



# School Newsletter

Reminder

New Homework menus out this week

## Homework Breakdown

### Rationale

Starting with evidence from research, our aim is to provide a relevant and manageable amount of homework that is achievable and aspirational, and also inclusive.

We believe that our improved homework expectations reflect our vision of valuing and respecting everyone as an individual with their own unique qualities.



### Spelling

#### Reception

Children will receive a key ring of tricky words which will gradually be added to as they progress through their Little Wandle phonic journey. We would like your child to practise reading the words until they can read them automatically. For some children who need further practise of recognising graphemes and their phonemes, a sheet will also be provided. The sheet explains the pronunciation and picture card for each phase, in the order they are taught.

Spellings of 3 CVC (consonant, vowel, consonant) spellings will be sent out in Autumn term 2 which will be based on what the children have learnt in Little Wandle Phonics that week.

#### KS1

We will send 5 weekly spellings home a week as a list. These will be based on what the children have learnt in Little Wandle Phonics that week. To consolidate their learning and encourage the practise of spelling these words, we have sent home a 'spelling activity menu' with games and strategies for your child to choose from.

#### KS2

We will send spellings home weekly that follow a particular spelling rule we are teaching in class. This is explicitly taught 3 x a week for 15 minutes, and also consolidated and woven into subjects across the curriculum. To consolidate their learning and encourage the practise of spelling these words, we have sent home a 'spelling activity menu' with games and strategies for your child to choose from.

# School Newsletter

## Whole School

**We will no longer test spellings. We believe this can be humiliating and unsupportive of some of our children. We recognise that children learn in different ways and at different speeds and believe that with the right support, in a psychologically safe environment, our children will flourish and achieve.**

**In addition to this, we also identify the spellings mistakes that are made consistently in their own writing and encourage our children to use the correct spelling independently. These are personal to your child. Through the use of a 'word wall' in their books, they are independently able to access and correct these common mistakes.**



## Reading

### Reception and KS1

**You can have a huge impact on your child's reading journey by continuing to practise reading at home. There are two types of reading book that your child will bring home.**

#### A reading practice book

**This will be at the correct phonic stage for your child. They should be able to read this fluently and independently. If your child is reading it with little help, please don't worry - your child needs to develop fluency and confidence in reading. Little Wandle reading books will be sent home once a week on a Thursday. Our expectation is that you read 5 times a week for 5 - 10 minutes. Please write in your child's planner when they have read to you.**

#### A sharing book

**Your child might not be able to read this on their own. This book is for you both to read and enjoy together. Discuss the pictures, enjoy the story, predict what might happen next, use different voices for the characters and explore the facts in a non-fiction book. The main thing is that you have fun!**

### KS2

**To encourage reading for pleasure and also reading for meaning, our expectation is that children in KS2 will read aloud to an adult for 15 minutes, five times a week. Children will then write the date and page number they have read to, in their planner. At the end of the week, children will be asked to summarise what they have read so far to their teacher or in their planner.**

**We understand that, at times, children may choose a book that they are not enjoying. We are very happy to have a discussion and choose a different book with your child – our aim is to encourage a love of reading in every child!**



# School Newsletter

## Maths

### Reception/KS1

To build your child's maths confidence we have invested in Numbots. This is an online platform that helps children learn how to add and subtract, improving their fluency and recall. Practising for 3 minutes a day, four times a week can gradually help your child to build a solid, conceptual understanding of number sense. We will send home your child's log in details.

### KS2

We will send home times tables to practise. We believe that learning these unlocks so many other areas of maths and helps our children to overcome any barriers. We have written their TT Rockstars username and password in their planners and will also send it out to you via email. The ever-popular TT Rockstars battles will re-commence in school too with a certificate awarded in Celebration Assembly on Thursday afternoons.

## Whole school activities for home

We send home a menu of activities that children might want to complete at home to further or consolidate their learning. We link these activities to our school values and our topics, as we know that some children enjoy extra challenge. We would love to see any completed activities and encourage children in all classes to share their homework and achievements with us. In addition to this, there are educational sites listed on our website to support learning and homework expectations/menus are available on our website on the Class pages.

Many thanks for your continued support to make sure every child thrives at Naburn Primary.



# School Newsletter



## **NABURN CE PRIMARY SCHOOL TERM AND HOLIDAY DATES 2025 / 2026**

### **AUTUMN TERM 2025**

**Staff Training. School closed: Monday 1<sup>st</sup> September 2025**

School Open: Tuesday 2<sup>nd</sup> September – Friday 24<sup>th</sup> October 2025

**Half-term: Monday 27<sup>th</sup> October - Friday 31<sup>st</sup> October 2025**

School Open: Monday 3<sup>rd</sup> November – Thursday 18<sup>th</sup> December 2024

**Staff Training. School closed: Friday 19<sup>th</sup> December 2025**

**Christmas Holiday: Monday 22<sup>nd</sup> December – Friday 2<sup>nd</sup> January 2026**

### **SPRING TERM 2026**

**Staff Training. School closed: Monday 5<sup>th</sup> January 2026**

School Open: Tuesday 6<sup>th</sup> January – Friday 13<sup>th</sup> February 2026

**Half-term: Monday 16<sup>th</sup> February - Friday 20<sup>th</sup> February 2026**

School Open: Monday 23<sup>rd</sup> February – Thursday 26<sup>th</sup> March 2026

**Staff Training. School closed: Friday 27<sup>th</sup> March 2026**

**Easter Holiday: Monday 30<sup>th</sup> March – Friday 10<sup>th</sup> April 2026**

### **SUMMER TERM 2026**

School Open: Monday 13<sup>th</sup> April – Friday 22<sup>nd</sup> May 2026

**Half-term: Monday 25<sup>th</sup> May – Friday 29<sup>th</sup> May 2026**

School Open: Monday 1<sup>st</sup> June – Friday 17<sup>th</sup> July 2026

### **ADDITIONAL DATES 2025 / 2026**

**Bank Holiday: Monday 4<sup>th</sup> May 2026**

**Staff Training. School closed: Monday 20<sup>th</sup> July 2026**