

# School Newsletter



Naburn Church of England  
Primary School



Newsletter : 93 20.01.26

## Headteacher's Introduction

Dear Parents and Carers,

Thank you for your continued support in making attendance a priority. We're pleased to share that our attendance has improved this week — but we know we can do even better together! Every single day in school is a valuable opportunity for your child to learn something new, share moments with friends, and build confidence. Even missing the occasional day can mean important learning is missed — and we want EVERY child to have the very best chance to shine.

We also have some exciting news to share...

The results of The Engagement Platform (TEP) Autumn pupil survey are in! TEP is the country's leading tool for measuring school stakeholder engagement, helping schools collect and interpret data to identify where action is needed, and contributing to a broader, evidence-informed cycle of school improvement.

I am delighted to announce that we have been awarded **four** certificates!

**Top 5% nationally** for pupil inclusion, pupil recommendation, and pupil enjoyment

**Top 10% nationally** for pupil effort

This is a fantastic achievement and a true reflection of how wonderful our children are — their enthusiasm, kindness, and commitment to learning make our school community so special.

Thank you once again for your support in helping our pupils thrive both in attendance and in their learning experiences.



- Please remember to send hats gloves and coats during cold weather

## Reflection Corner

"Let us not become weary in doing good, for at the proper time we will reap a harvest if we do not give up"

Galatians 6:9



# School Newsletter



## Dates for your diary

23-25 <sup>th</sup> January	Big Garden Birdwatch
10 <sup>th</sup> February	Young Voices at Sheffield Arena
13 <sup>th</sup> February	Break up for half term
23 <sup>rd</sup> February	Back to School
5 <sup>th</sup> March	World Book Day
26 <sup>th</sup> March	Easter Service – 2pm in Church
26 <sup>th</sup> March	Break up for Easter holidays
13 <sup>th</sup> April	Back to school
4 <sup>th</sup> May	Bank Holiday Monday
22 <sup>nd</sup> May	Break up for half term
1 <sup>st</sup> June	Back to school
17 <sup>th</sup> July	Leavers Service – 2pm in Church
17 <sup>th</sup> July	Break up for Summer



Aspiration Respect

### Nut Free

Just a reminder that we are a nut free school, it is **REALLY** important that no nuts are brought into school – this includes products that contain nuts and products that "may contain traces of nuts"

## celebration assembly

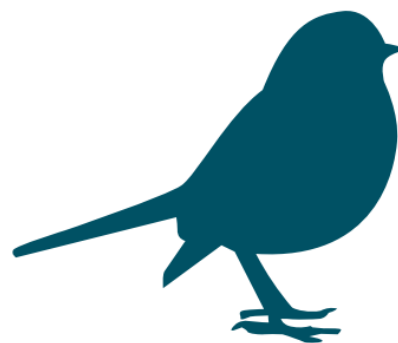
JUST A REMINDER THAT WE HOLD OUR CELEBRATION ASSEMBLY EVERY THURSDAY AFTERNOON AT 2.50PM

ALL PARENTS/CARERS WELCOME – WE'D LOVE TO SEE YOU THERE

### Big Garden Birdwatch



23-25 January 2026

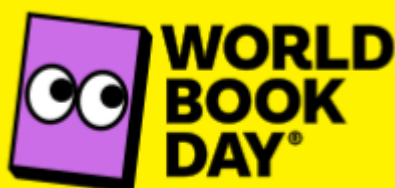


**FOLLOW THE LINK TO TAKE PART**

[Big Garden Birdwatch](#)

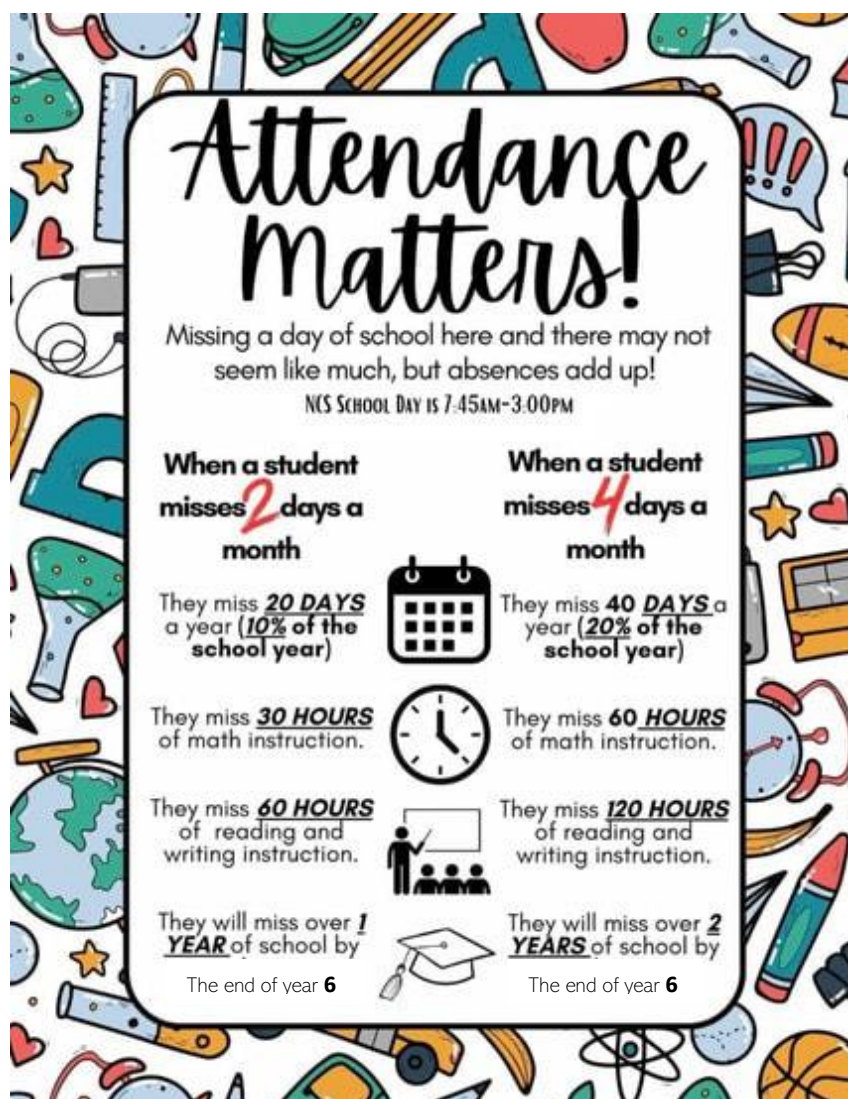
**Big Garden Birdwatch**

23-25 January 2026



**Thursday 5<sup>th</sup> March – more details to follow . .**

# School Newsletter



## Absence Reporting

Please can we remind parents and carers that all absences must be reported daily to the school office before 8:50am, giving a clear reason for absence.

A message can be left on the school answerphone at any time. For cases of ongoing illness you must contact the school every day, otherwise this could be recorded as unauthorised absence.

Any unavoidable medical appointments, e.g. hospital appointments, must be reported to the school office in advance, and a form completed.

Any requests for other time off during term time will be recorded as unauthorised absence, unless there are exceptional circumstances. A form must also be completed in advance for all term time absences.

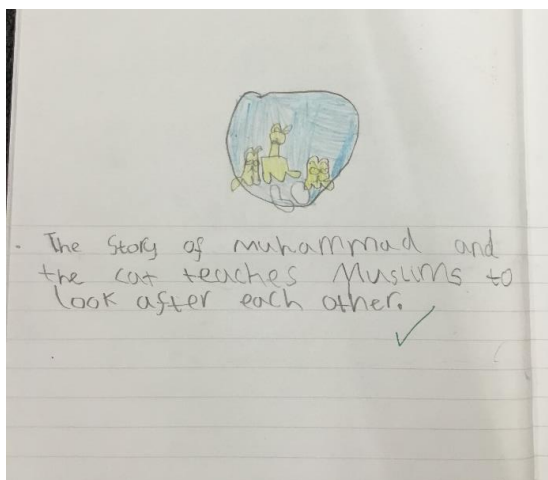


# School Newsletter

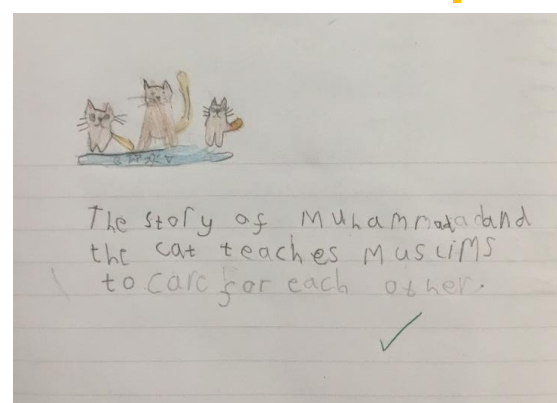
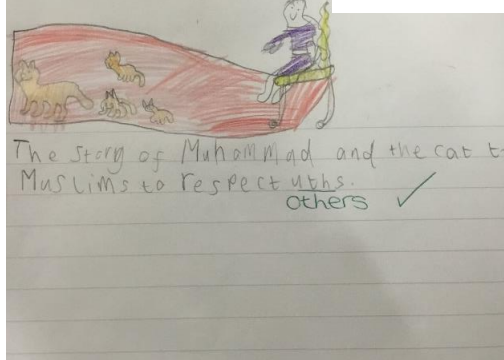
Reception have been subitising to 5 this week and recognising the composition of the number 5. We placed 5 double sided counters in a cup, shook it and tipped it out to find our parts and whole. We discussed what the other part would be if all counters were the same colour. The children were brilliant at recognising their numerals to 5. They enjoyed it so much they kept asking for another turn!



This week in RE we've been learning to understand why the Prophet Muhammad is so important to Muslims. We talked about how the Prophet Muhammad is a leader and what being a leader means. We listened to the story of Muhammad and the Cat and what this story teaches Muslims. We decided that the story teaches Muslims to care for others and all God's creatures, to respect others and to treat others the way they would want to be treated.



15.1.26  
WALT: Say why Muslims try to follow Muhammad and have him



Acorn Class

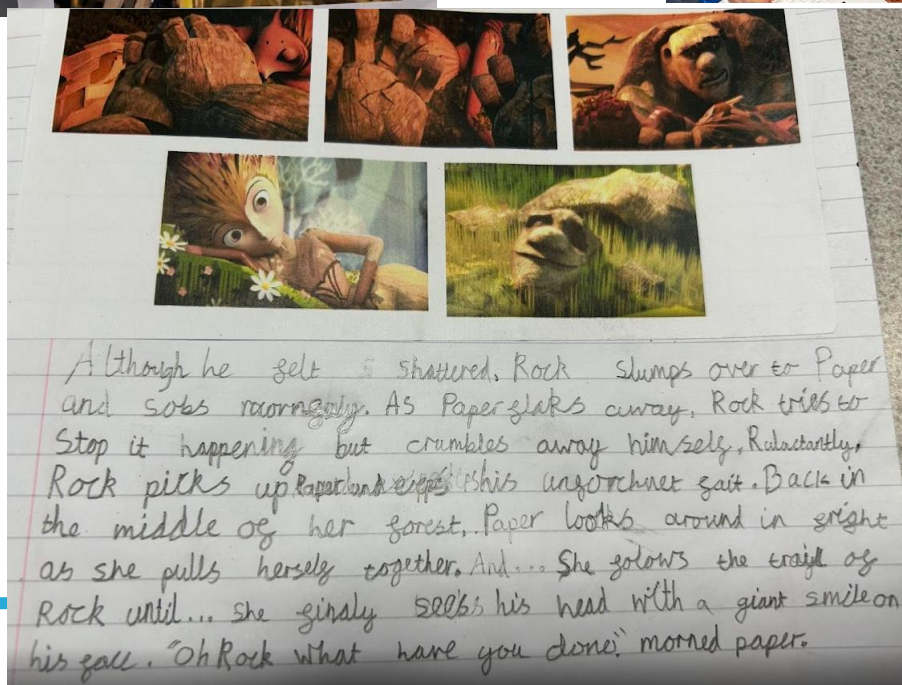
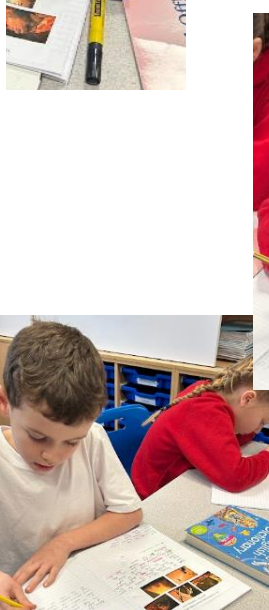
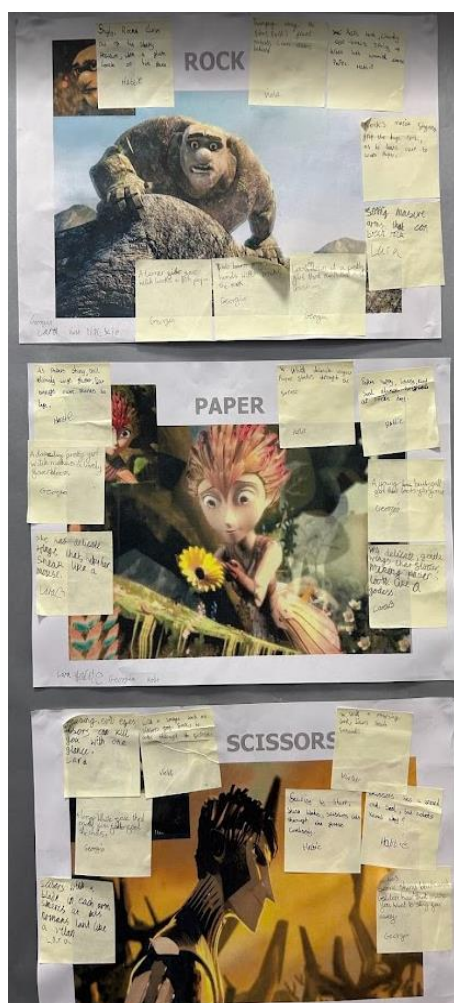




# School Newsletter



In Maths, Willow class have continued to explore times tables and counting in multiples. In English, the children wrote a 5-part story (opening - build up – main event – reaction and ending) for the film narrative 'Broken' using descriptive language and dialogue to describe action and the relationship between Rock, Paper and Scissors.

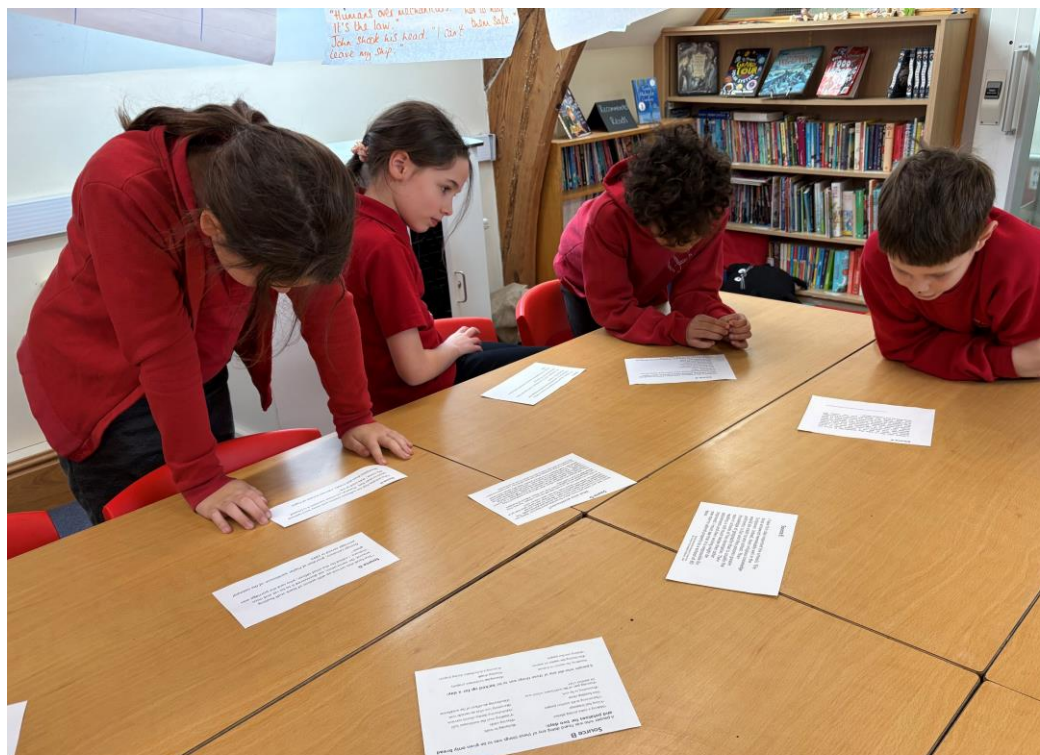




# School Newsletter



This week, Sycamore have been investigating life in the Victorian workhouses using sources. We looked at the difference between primary and secondary sources and sorted them into categories. The children then thought about how reliable these sources were and which ones provided the most accurate evidence about rules, food, work and punishments in the workhouse.



# School Newsletter



## **NABURN CE PRIMARY SCHOOL TERM AND HOLIDAY DATES 2025 / 2026**

### **AUTUMN TERM 2025**

**Staff Training. School closed: Monday 1<sup>st</sup> September 2025**

School Open: Tuesday 2<sup>nd</sup> September – Friday 24<sup>th</sup> October 2025

**Half-term: Monday 27<sup>th</sup> October - Friday 31<sup>st</sup> October 2025**

School Open: Monday 3<sup>rd</sup> November – Thursday 18<sup>th</sup> December 2024

**Staff Training. School closed: Friday 19<sup>th</sup> December 2025**

**Christmas Holiday: Monday 22<sup>nd</sup> December – Friday 2<sup>nd</sup> January 2026**

### **SPRING TERM 2026**

**Staff Training. School closed: Monday 5<sup>th</sup> January 2026**

School Open: Tuesday 6<sup>th</sup> January – Friday 13<sup>th</sup> February 2026

**Half-term: Monday 16<sup>th</sup> February - Friday 20<sup>th</sup> February 2026**

School Open: Monday 23<sup>rd</sup> February – Thursday 26<sup>th</sup> March 2026

**Staff Training. School closed: Friday 27<sup>th</sup> March 2026**

**Easter Holiday: Monday 30<sup>th</sup> March – Friday 10<sup>th</sup> April 2026**

### **SUMMER TERM 2026**

School Open: Monday 13<sup>th</sup> April – Friday 22<sup>nd</sup> May 2026

**Half-term: Monday 25<sup>th</sup> May – Friday 29<sup>th</sup> May 2026**

School Open: Monday 1<sup>st</sup> June – Friday 17<sup>th</sup> July 2026

### **ADDITIONAL DATES 2025 / 2026**

**Bank Holiday: Monday 4<sup>th</sup> May 2026**

**Staff Training. School closed: Monday 20<sup>th</sup> July 2026**