



Small School Big Ideas

NABURN C.E. PRIMARY SCHOOL  
Naburn, York  
YO19 4PP  
Tel: 01904 551075  
Fax: 01904 633287  
E-mail: [naburn.primary@york.gov.uk](mailto:naburn.primary@york.gov.uk)  
[www.naburnschool.com](http://www.naburnschool.com)  
Twitter: @naburn\_primary  
Headteacher: Mr J Green



A Nut Free School



14.10.22

Dear Parents and Carers,

As always, there has been plenty going on this week and I will do my best to report it to you in this letter and also manage to give you a taste of some of what is still to come this term.

I am pleased to report that we have started our new phonics scheme this week. This has taken a good deal of work from all members of staff and in particular Mrs Burton. I know that this initiative will show quick results, improve learning and make the curriculum far more accessible for all our children. Thank you Mrs Burton and all the Key Stage 1 team. It is important for me to say that all staff will have received training in the Little Wandle Phonics Scheme by the end of the half term and this will also ensure that there is really good, consistent understanding and delivery throughout the school.

We also received a Teaching and Learning Review from City of York Council this week. This focussed on writing throughout the school and early feedback has been positive. The main aim was to monitor improvements and progress, but also prepare the school for the next Ofsted monitoring visit that we will hopefully receive in December. Many thanks to all the Teaching staff for all their hard work in preparing for this and in particular Mrs Noble, whose coaching and leadership has inspired our team.

Please use this link if you prefer pictures to words. <https://youtu.be/39XfzEaY0YA>

### Football Match

A great result for our fabulous football team on Wednesday afternoon. We played St Barnabas CE Primary School and won 4-1. There were magnificent performances from all the team, plenty of excellent play from both sides along with 'oodles' of superb sporting behaviour.

I have to say that the score would have been far more than 4-1 if it wasn't for their goalkeeper who played as well as the Italian goalkeeper in the penalty shootout at the Euros final. Well done Team Naburn. **UNS!**

Hope   Community   Perseverance   Compassion

*'Our Christian Vision is to build an environment of support and growth rooted in core values of perseverance, hope and community.'*

*'With God's help we work together, to try our best to take root in good soil and grow.'*



### **Millbridge Farm Meeting – 21.10.22**

If you are a resident of Millbridge Farm, **please** make every effort to attend a meeting I am holding for you all at Vicky's House next Friday at 10am. This will mainly be an opportunity for you to meet me and ask school related questions. I will also be speaking to you about how you can best support your child's learning at home. Thank you

### **Open Day – 2.11.22**

I am keen to show our working school off to you, our community, other parents in other catchment area, the Local Authority and Multi Academy Trusts. With this in mind, please see the link below which gives details of our Open Day on Wednesday 2<sup>nd</sup> November. Feel free to share it on social media – our doors are wide open and we can't wait to show everyone our fabulous school.

<https://www.naburnschool.com/general/are-you-looking-for-a-school-place-for-your-child-open-day-for-prospective-families>

The day itself will be an opportunity for people to observe the school functioning, show that we are doing all we can for our children and families, while at the same time sending out a positive message to everyone that we are determined to keep improving. I do hope that you can join us for at least one session over the course of the day.

### **PE Kits**

I have recently noticed quite a variety of PE kit in the playground and some of it is becoming untidy and too casual. Current PE kit is white t-shirt (with or without school logo), black shorts or joggers and red or black sweatshirt/hoody.

I am beginning to plan for the future and have started some research into introducing a new house PE kit. I am aware that family budgets are tight so would not make it compulsory and possibly would look to start it properly in the new academic year.

The kit would include a House coloured T shirt, sweatshirt for winter, black shorts, black tracksuit bottoms for winter and white socks.

I would very much appreciate your thoughts on this.

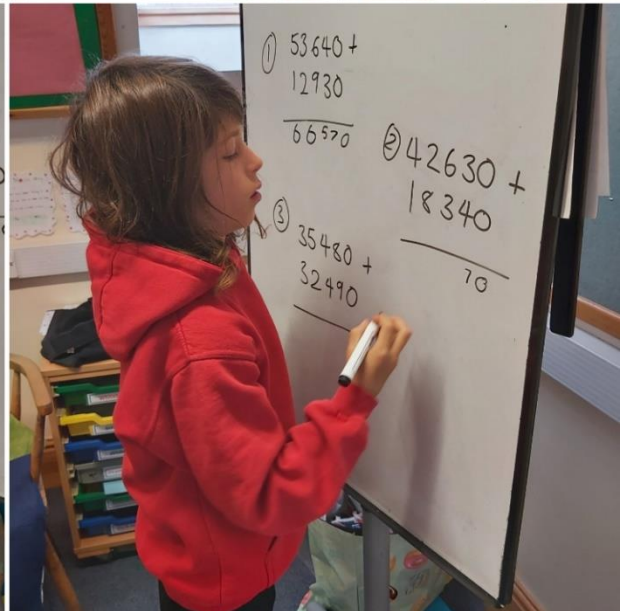
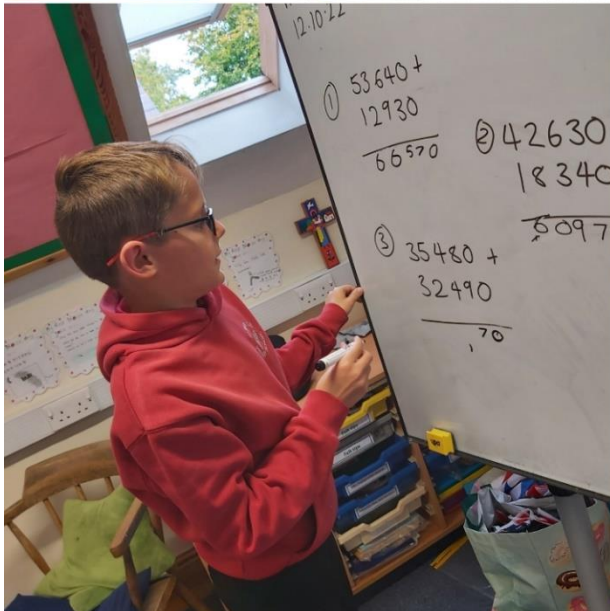
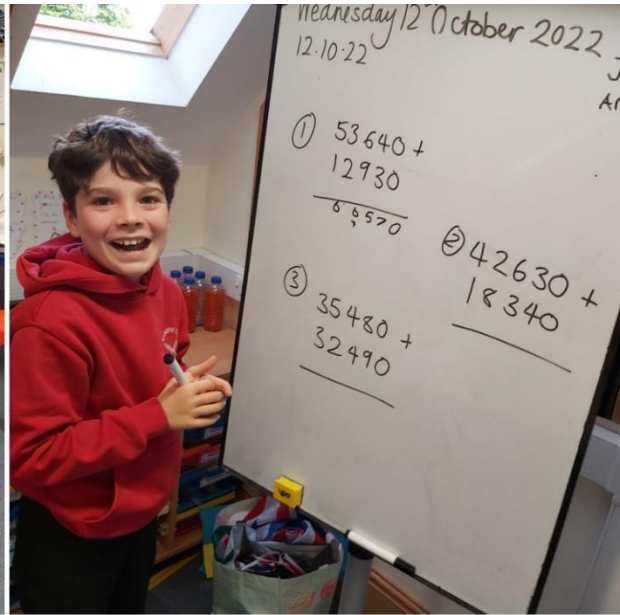
**Hope      Community      Perseverance      Compassion**

*'Our Christian Vision is to build an environment of support and growth rooted in core values of perseverance, hope and community.'*

*'With God's help we work together, to try our best to take root in good soil and grow.'*

## Four operations in Sycamore

Great focus in Y5 and Y6 maths this week - their first lesson on the four operations - using column addition and then, to check our answers are correct, using the inverse operation of subtraction. Plenty of fun, great learning and satisfaction!



## Walk to School Week

Thank you to all the families who made active journeys to school this week for 'Walk to School Week'. Let's try and keep these good habits going.

## PTA News!

Just a reminder about the two 'spooktacular' events The Friends of Naburn have coming up. The first being movie night on Thursday 20 October. The film starts at 6pm, in the school hall. There is a small cost of £3 per child/ £5 for 2 siblings, for which there'll be popcorn and juice. The children have chosen to watch the animated version of The Adams Family. This is a PG rated film so please make sure you

Hope      Community      Perseverance      Compassion

*'Our Christian Vision is to build an environment of support and growth rooted in core values of perseverance, hope and community.'*

*'With God's help we work together, to try our best to take root in good soil and grow.'*

are happy for your child/children to watch this. Children can come dressed in PJs with teddies, blankets, cushions...the snugglier the better. KS1 must be accompanied by an adult. Any KS2 children will need to be collected from school at 7.30pm.

We also have the Halloween Party coming up on 31 October. This is at the Village Hall between 5.30 - 6.30, Children (and grownups) are encouraged to come dressed in their most terrifying outfits. There will be party games, prizes, hot dogs and of course the odd sweet treat. Again, KS1 children need to come accompanied by an adult and KS2 parents are more than welcome to stay and join in the fun. The village are very kindly organising a pumpkin trail around the village, which the children will be able to enjoy after the party, along with any trick or treating families may wish to do.

We hope to see as many of you as possible at these **'terrorific'** events!

The Friends of Naburn are also delighted to be bringing you a delicious range of Ultimate Christmas Puddings. These will be perfect for the big day or as a scrumptious gift. More information on these and how you can pre-order them will come soon. In the meantime, we're looking for a festive design for the label and who better to create one than the children themselves. We will be sending everyone home with a template label. If your child would like the chance of having their festive creation adorn our puds then please can they use the template and make sure they are returned to school on Monday. We have a VIP ready and waiting to judge the designs and pick a winner.

Please get in touch if you would like to join or help the Friends of Naburn in any way. We're a small group, with lots of exciting ideas and welcome any support you can give.

#### **Christmas Treat funded by the PTA**

We are so excited and very grateful to the PTA for giving the school the funds to book the Riding Lights Theatre Companies Christmas Production of 'Nearly the Goat'. This will take place at the Village Hall on Monday 28<sup>th</sup> November.

#### **School Update Meeting –Wednesday 19<sup>th</sup> October – 6.30pm**

There will be a meeting for all parents and carers on **Wednesday 19<sup>th</sup> October at 6.30pm** in the school hall. The purpose is to summarise the work that has been done by the school since our last meeting in July, explain to parents how much has been achieved alongside the current school position, then give a brief overview of what we hope to achieve by the end of this academic year.

All parents of children of a pre-school or Primary School age from our catchment area are invited to attend, even if they have taken their children to other schools over the course of the year. I am very keen to help them to understand that the door to Naburn CE Primary School always remains open for their children to return.

Please make every effort to attend and also to get to school by **6.15pm**. This will help us make a decision as to the size suitability of the hall and whether we need to move the meeting to the Village Hall.

Finally, please also note that Maxine Squire, CYC Assistant Director of Education, will be attending the meeting, along with School Governors, representatives from the Diocese and Councillor Vassie.

**Hope      Community      Perseverance      Compassion**

*'Our Christian Vision is to build an environment of support and growth rooted in core values of perseverance, hope and community.'*

*'With God's help we work together, to try our best to take root in good soil and grow.'*



## Children in Need – Early information

I am excited to announce that we will be holding our second, very own Naburn CE Primary School 'Children in Need' Talent Show.

This will take place on the morning of Friday 18<sup>th</sup> November and will begin at 9.15am in the Village Hall. For the fun of either taking part, or being part of the audience, please will children bring a pound coin on that day which will go in our Children in Need Collection Bucket and then be sent off to this very worthy cause! Parents and carers are also invited.

Do please encourage your child to take part. They might like to play an instrument, sing a song, tell jokes or dance. They might also be quite talented at something else that they would like to perform in front of our encouraging audience.

I will be asking those children who are interested in this to write or record their names with their Classteachers, along with a short description of the talent that they will be performing. The closing date for them to register their interest will be Friday 4<sup>th</sup> November. After half term, I will be organising rehearsals for the children. This will also be an opportunity for me to get an idea of how brilliant the participants are! I can't wait!

## Harvest Festival

It is our Harvest Festival on Friday 21<sup>st</sup> October. This is a joint service with the church again which starts at 2pm. The retiring collection will be split between church funds and Martin House Hospice.

Our harvest gifts will go to the homeless charities in York as usual. Items suitable for breakfasts such as cereals, porridge, fruit juice, tea, coffee and fruit will go to **Carecent** who serve breakfast to the homeless. Other items such as tins or vegetables will go to **Arclight**, a shelter for the homeless, along with donations of warm clothes. Please bring your items into school on **Thursday morning (20<sup>th</sup> October)** so that we can take them along to church when we rehearse. Items can be placed in a box or loose in a bag. I know that these organisations will be very grateful.

We are looking forward to welcoming you to the service. Reverend Maxine Waller will lead Worship with school contributions that link the harvest theme to the work we will be doing in school over the next couple of weeks.

## Playground Clean Up – Saturday 8<sup>th</sup> October

You would have seen brilliant Naburn spirit and teamwork at the school last Saturday morning. Thank you to all the people who came along to help tidy the playground, paint the railings and put up a new shed for the playground equipment! UNS!

Hope      Community      Perseverance      Compassion

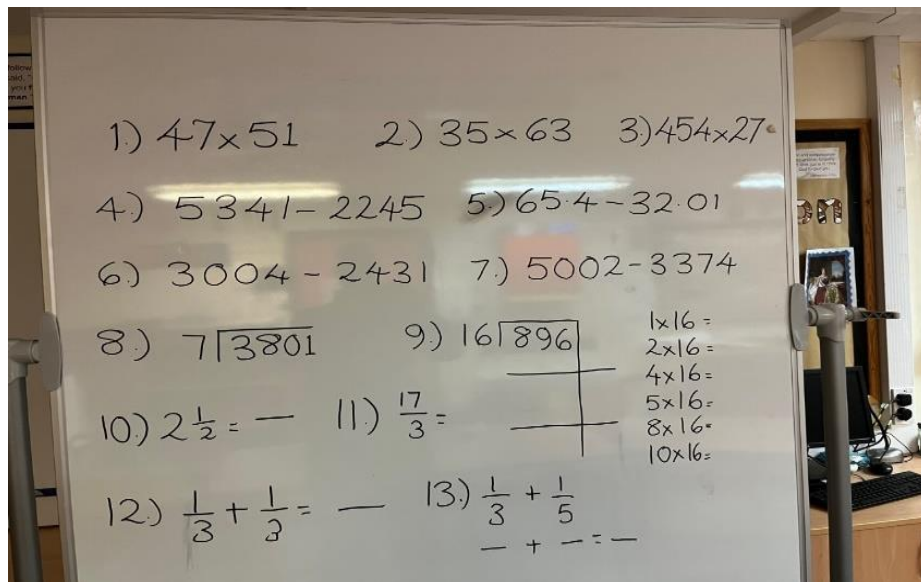
*'Our Christian Vision is to build an environment of support and growth rooted in core values of perseverance, hope and community.'*

*'With God's help we work together, to try our best to take root in good soil and grow.'*



### 'Ave a go!

Please take a look at these and 'Ave a go'. I am happy to mark them, or talk to you at any time about the maths methods we use in school.



Hope    Community    Perseverance    Compassion

*'Our Christian Vision is to build an environment of support and growth rooted in core values of perseverance, hope and community.'*

*'With God's help we work together, to try our best to take root in good soil and grow.'*

## Parent/Headteacher Meetings – Autumn Term 2022

Parent/Headteacher meetings are opportunities for you to make an appointment to talk about any school related matters that you might want more information about, or any topics which you would like to bring to my attention.

The individual meetings will take place on a Monday and begin at 4.30pm and finish at 6pm. I will set them out in fifteen minute sessions.

If you would like to make an appointment, please call the school office. I will make a note of these and get back to you with a time for you to come into school.

Please note the dates for these meetings below, the next one being next week.

Meeting Date	Time
31 <sup>st</sup> October	4.30pm to 6pm
21 <sup>st</sup> November	4.30pm to 6pm
5 <sup>th</sup> December	4.30pm to 6pm

## Online Safety – FIFA 23

There's no disputing that FIFA has been an immense success – but what's less impressive is its tendency to look defensively shaky against some online threats. Young players aiming to recreate their football heroes' exploits can be at risk from abusive opponents, expensive in-game purchases and the "just one more game" mentality. This week's #WakeUpWednesday guide tackles FIFA 23. See the link below

<https://www.naburnschool.com/e-safety-parent-information/e-safety-quick-read-fifa-23>

## Primary Picture News

**Story:** All Lidl chocolate bunnies are to be melted following the Federal Supreme Court of Switzerland's ruling, agreeing that they are similar to Lindt's own bunny-shaped chocolate treat.

**Question:** If we do something wrong, who should decide the consequences?

**Virtual Picture News:** Found here: [www.picture-news.co.uk/discuss](http://www.picture-news.co.uk/discuss)

## Stars of the Week, House Cup Winners and celebrating great work!

Well done to our House Winners, Perseverance and House attendance champs, Hope. Congratulations to our Stars of the Week. Great contributions by all of them to our school community and thank you to all the parents and relations who came along to the special assembly.



Hope      Community      Perseverance      Compassion

*'Our Christian Vision is to build an environment of support and growth rooted in core values of perseverance, hope and community.'*

*'With God's help we work together, to try our best to take root in good soil and grow.'*

## Attendance figures

Attendance data for this week is below:

- This week's School Attendance W/C 10.10.22 = 92.66% - Unauthorised absence = 2.82%
- Last week's School attendance = 84.44% - Unauthorised absence = 2.31%
- Whole School Attendance Sept to date = 90.24% - Unauthorised absence = 1.71%

**WE NEED EVERY CHILD IN SCHOOL EVERY DAY AND IF THEY ARE NOT IN OUR SCHOOL THEY SHOULD BE ATTENDING ANOTHER.**

## TTRockstars Battle Dates

Here is our timetable for the 1<sup>st</sup> half of the Autumn Term:

Date	Year Groups Battling
10.10.2022	Year 6 and Year 4
17.10.2022	Whole School Battle- All Year Groups (Year 2 -6)

Happy Battling Naburn!

I hope you have a fabulous weekend. **UNS!**

Best wishes



Jonathan Green  
Headteacher

## Safeguarding

If you have significant concerns for the welfare of a child, in addition to being able to contact Mr Green, Mrs Atkinson or Mrs Coultas during school hours, you may wish to make direct contact with the [York MASH \(Multi-Agency Safeguarding Hub\)](#) on T: 01904 551900, option 3. They operate an out-of-hours service so concerns can be raised with them at any time.

Hope    Community    Perseverance    Compassion

*'Our Christian Vision is to build an environment of support and growth rooted in core values of perseverance, hope and community.'*

*'With God's help we work together, to try our best to take root in good soil and grow.'*