



Small School Big Ideas

NABURN C.E. PRIMARY SCHOOL  
Naburn, York  
YO19 4PP  
Tel: 01904 551075  
Fax: 01904 633287  
E-mail: [naburn.primary@york.gov.uk](mailto:naburn.primary@york.gov.uk)  
[www.naburnschool.com](http://www.naburnschool.com)  
Twitter: @naburn\_primary  
Headteacher: Mr J Green



A Nut Free School

17<sup>th</sup> December



Dear Parents

We have had the most lovely end to our Autumn Term which has been full of Christmas fun and festivities! Firstly, thank you for all the support that you have given to all our Christmas events. We have been most fortunate as a school to have managed all the planned Christmas activities apart from the school disco. Congratulations to you for keeping your children so fit and congratulations to the staff and Governors for working so hard pre and post inspection to keep things running smoothly at school.

### Christingle Service

Our final event of the term was our Christingle Service. It was a magical service, with the children telling the story of the first Christmas in words, action and song so beautifully. Thank you to everyone who attended. I am sure that you will agree that it was the loveliest way to finish the term. I extend my gratitude to Reverend Simon Bray for his message and blessing and Mr Horne who played organ and keyboard for us. My thanks also extend to Jean Dale for all her work preparing St Matthews for us.



Hope Community Perseverance

*'Our Christian Vision is to build an environment of support and growth rooted in core values of perseverance, hope and community.'*

*'With God's help we work together, to try our best to take root in good soil and grow.'*

## Christmas Hamper Raffle

Congratulations to all the winners of the Friends of Naburn School Hamper Raffle. What incredible prizes! Thank you to the PTA for all the hard fund raising work they have done over the Christmas period selling raffle tickets and also for running the Chocolate Tombola at Stillingfleet Christmas Fair. I will give you totals for the amounts of money that both of these events raised in the New Year.

## Christmas Parties

The Christmas parties for the children were thoroughly enjoyed by all. Total excitement and total enthusiasm through all the games, food and dancing, but then total silence when the special guest arrived... Father Christmas! You could have heard a pin drop! Thank you again to all the parents who supported the events by helping out on the day and thank you to Santa Claus for dropping in.



## ASC Christmas Party

Miss Hansford and the After School Club team, put on a wonderful party for the children who attend. Thank you to Miss Hansford, Miss Gylte and Miss Redman for all that they have done over the Autumn Term. They are a superb team and we are so lucky to have them.

## Christmas Dinner

School Christmas dinner was absolutely sensational. Julie the cook, made it such a gorgeous special meal for us. The crackers added to its value and we loved telling each other cracker jokes while wearing our party hats and enjoying our dinner. Thank you Julie



Hope      Community      Perseverance

*'Our Christian Vision is to build an environment of support and growth rooted in core values of perseverance, hope and community.'*

*'With God's help we work together, to try our best to take root in good soil and grow.'*

## Y6 Assessment and SATs information Evening

We managed to fit in the assessment meeting for Year 6 parents yesterday. I do hope that those people who attended found it useful and gave you a better understanding of how the children will be assessed and tested in their final year at Naburn along with giving you more ideas about how you can best support your child's learning at home.

## School Uniform

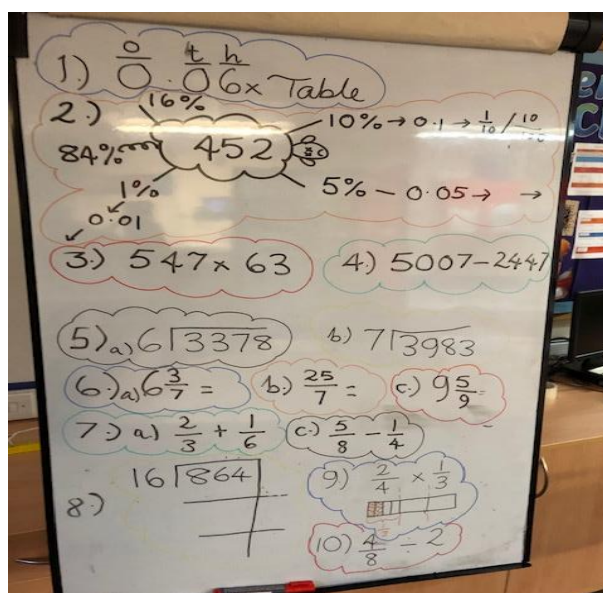
We will be making second hand uniform available in school from the start of the Spring Term. Please help us with this project by bringing us old uniform which your child has grown out of and is still in a good condition. Thank you

## Advent Window Trail

We have had our first full week of the Naburn Advent window trail and the village looks so beautifully festive. Thank you to all those who have taken part and supported this special village event. More information will follow in the New Year.

## 'Ave a Go!'

The 'Ave s Go' Christmas board is here! Please have a go.



Hope      Community      Perseverance

*'Our Christian Vision is to build an environment of support and growth rooted in core values of perseverance, hope and community.'*

*'With God's help we work together, to try our best to take root in good soil and grow.'*

### **Our Stars of the Week!**

Congratulations to this week's stars who have made great contributions to the life of the school this week and been exceptional role models week and been exceptional role models.



### **Message from the Secretary of State for Education**

Please note the following bullet point taken from a message from the Secretary of State for Education that is relevant to our school setting:

- schools and colleges to ask parents and other visitors to take a lateral flow device (LFD) test before attending a school or college event

### **Daily testing for contacts of COVID-19**

From 14 December, a new national approach to daily testing for contacts of COVID-19 has been introduced. All adults who are fully vaccinated and children aged 5 to 18 years and 6 months, identified as a contact of someone with COVID-19 – whether Omicron or not – should take an LFD test every day for 7 days instead of self-isolating. Children under five years old do not need to take part in daily testing for contacts of COVID-19 and do not need to isolate.

Once notified by Test and Trace as a close contact, all eligible staff, pupils and students are strongly recommended to take a LFD each day for 7 days and report the results through the [online reporting system](#) and to their setting. If they test negative, they can continue to attend their education setting. Outside of the education setting, they should continue to follow [national guidance](#). This approach should also be adopted over the Christmas holiday and on return in January. All staff and secondary aged pupils and students should have access to a box of 7 LFD test kits from their education setting.

Hope      Community      Perseverance

*'Our Christian Vision is to build an environment of support and growth rooted in core values of perseverance, hope and community.'*

*'With God's help we work together, to try our best to take root in good soil and grow.'*

### **TT Rockstars (Message from Mrs Mann)**

Congratulations to Year 6 for winning the whole school battle last week and winning an extra playtime!

Very well done to all the children who took part in the battles throughout the Autumn Term. A new timetable for the Spring Term battles will be released in January 2022 with a 'Teachers vs Whole School' battle to start off the New Year!

Happy times tabling Naburn!

### **Picture News**

**Story:** Since 2007, John Lewis have released Christmas adverts. Each year, viewers tune in to watch the story unfold and see what message it shares. This year's John Lewis advert is all about friendship.

**Question:** What do we look for in a good friend?

All that remains for me to write, is to wish you a Merry Christmas and a Happy New Year. I look forward to seeing you all in 2022.

Best wishes



Jonathan Green  
Headteacher

Hope      Community      Perseverance

*'Our Christian Vision is to build an environment of support and growth rooted in core values of perseverance, hope and community.'*

*'With God's help we work together, to try our best to take root in good soil and grow.'*