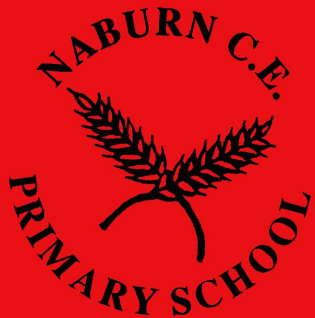


Mezzanine Project

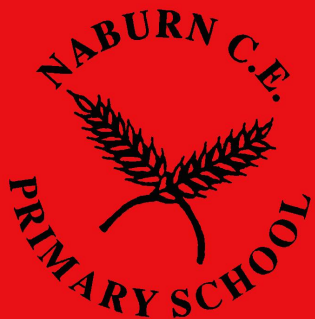
Presentation to Parents

28 January 09



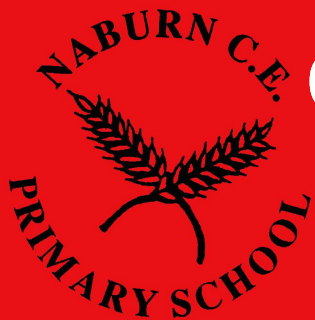
History

- Built in 1872 and largely unchanged since
- Conservatory added
- Management space reorganised in 2005
- Near full capacity
- 21C Educational initiatives require space
- Increasing Health, Safety and Disability agenda



Space Issues

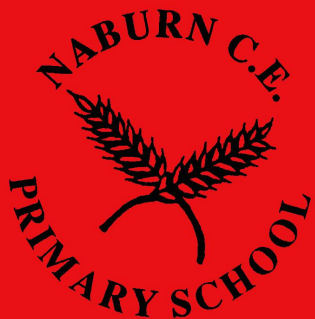
- Little flexibility in current layout
- Library not suitable as a teaching space
- 21C learning requires more storage space
- Extended curriculum requires space
- Extended schools agenda requires space
- Safety and access requires space



Conclusion: We need more space

Other Issues

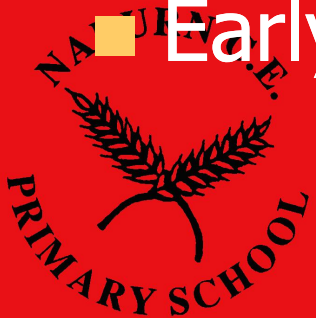
- Opportunity to make the school DDA-compliant
- Pupil numbers will not increase
- Do not want to compromise playground space – already limited
- Ensure EY outdoor teaching is not compromised
- Extend the school's offering to the community



First Proposal

Would have:

- New extension at the back of the school
- Single storey - so easy DDA compliance
- Very cost effective
- Capital grants won for project
- Fulfilled all storage and resource needs
- Early start – minimum disruption



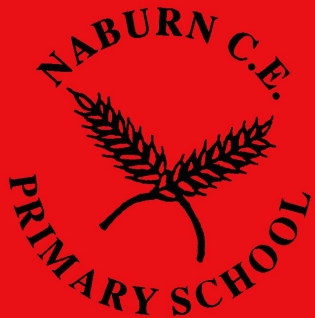
Re-Think

- Planning permission rejected February 08
- Advised not to redesign or appeal
- New feasibility was commissioned
- Two options developed – both would be significantly more expensive!!!
- Risk of losing original grant
- Risk of surrendering School reserves



Mezzanine

- Decided that the only viable option is to develop the roof space above Yr 5/6 class room.
- Create a mezzanine level
- Stair & lift access required
- No major planning issues – the only external feature change is a Velux-type windows
- Can also extend above Yr 3/4 room in the future

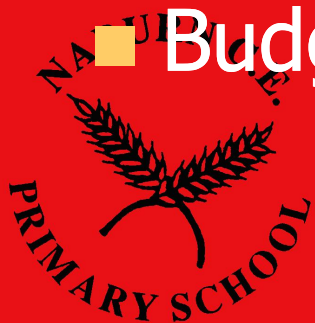


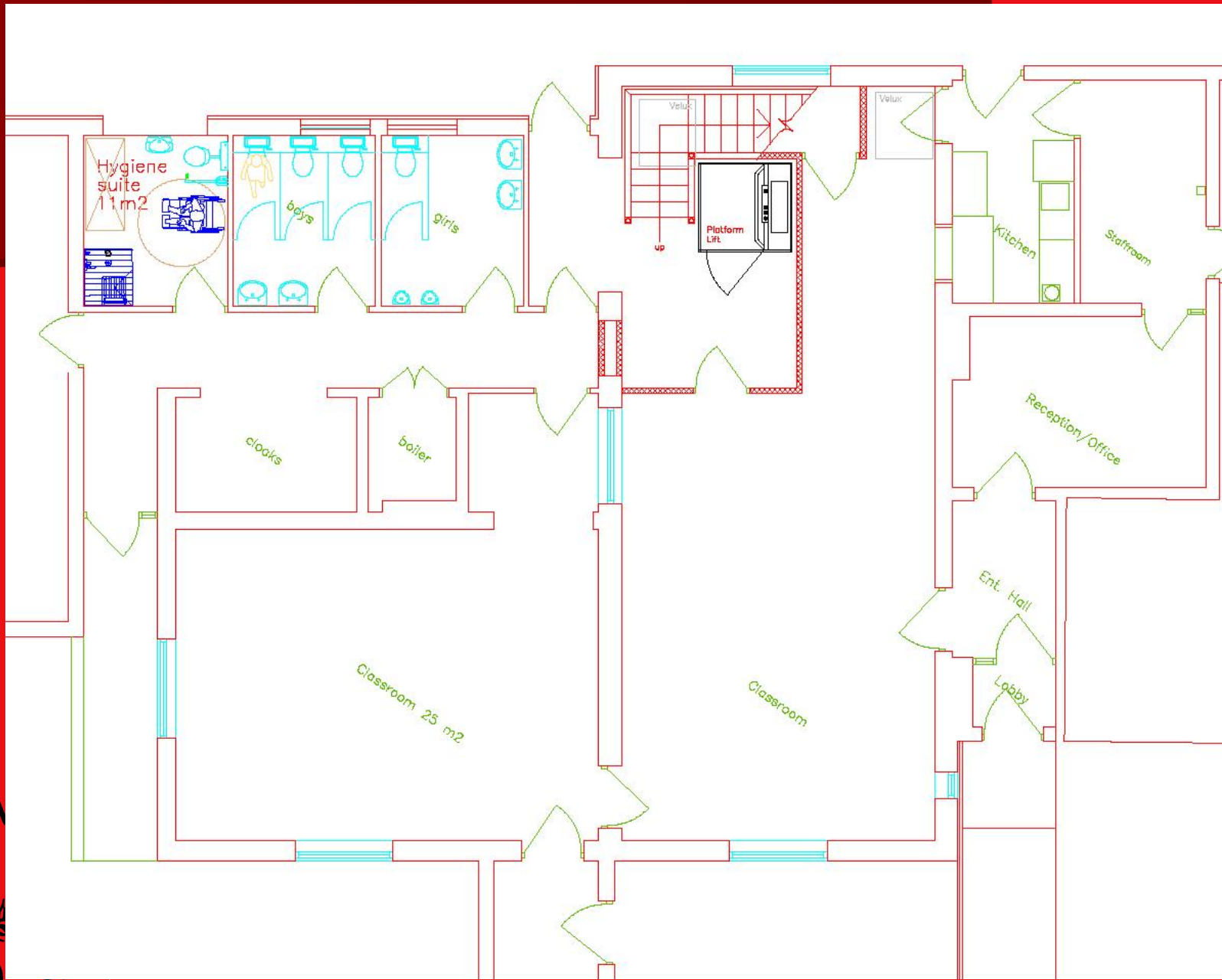
Space

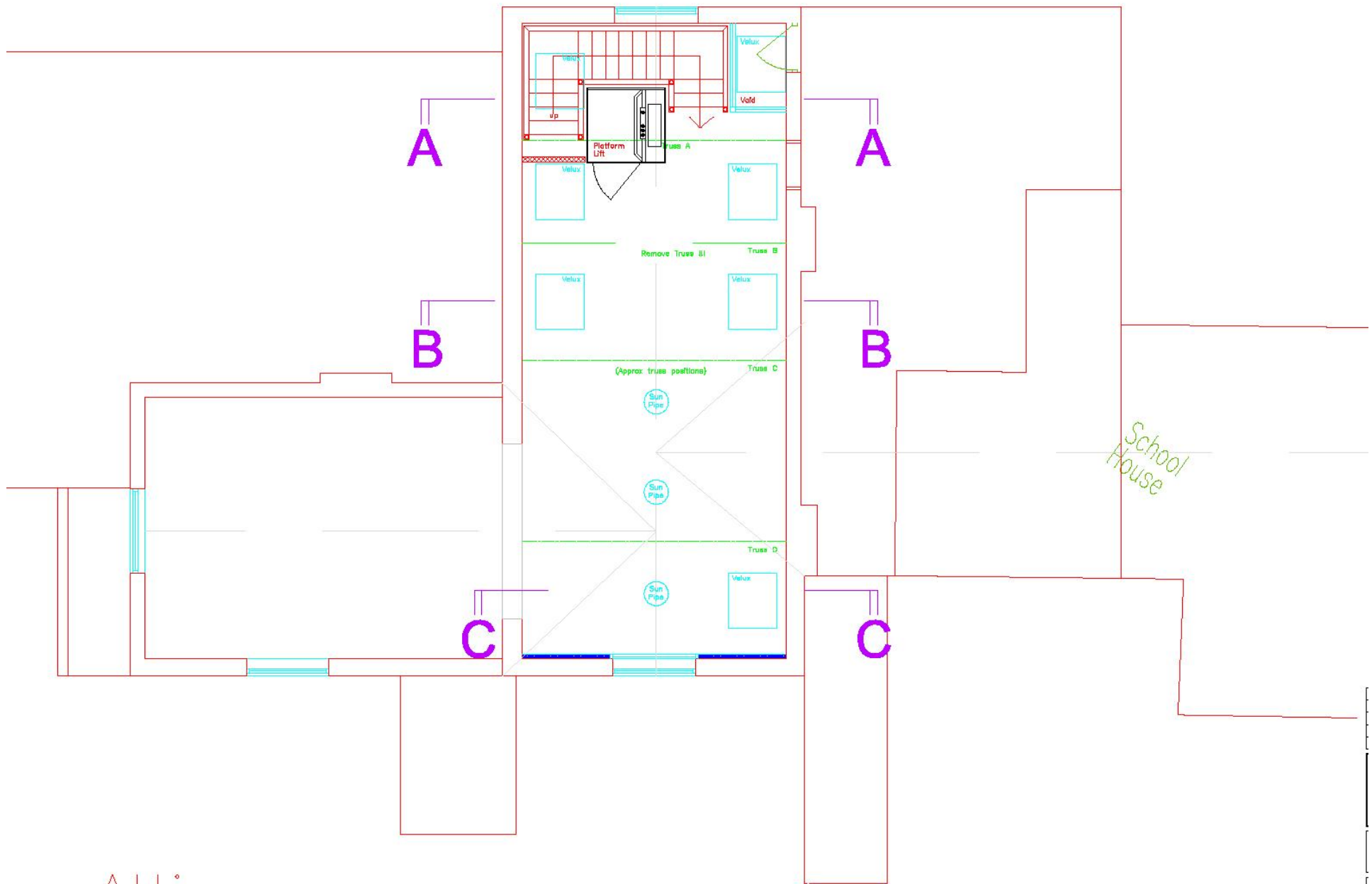
- Minimal loss of teaching space in Yr 5/6
- Significant increase in useable area
- Separate teaching areas – fully accessible without disturbing other groups
- Fully flexible room for multiple use

BUT

- Budget is significantly more than before



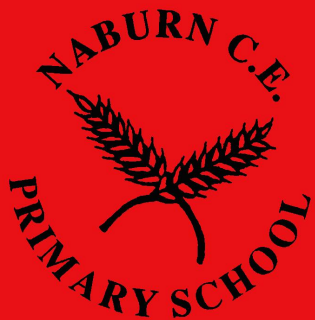




Attic

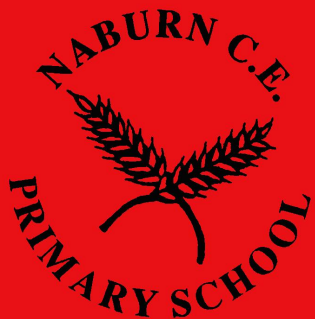
Proceed?

- Extended Schools money has brought project in reach, but laid down...
- Strict conditions, which we have to meet in 2010 anyway
- Project is potentially financially viable
- Governors opt to recommend the project
- Could start this Summer



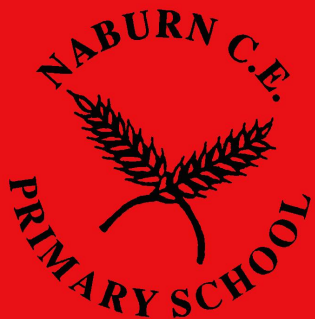
Autumn 2009

- Main construction over summer break
- Will continue into the autumn term
- Large class room will not be available for use
- Disruption will be significant – but diminishing
- Temporary teaching area may be required
- Could be finished by half term



Extended Schools

- Provision will have to be made for Wrap Around Care
 - Will need organising & running
 - Variant of the Liquorice Club?
-
- Room possibly available for village use – it's a resource.

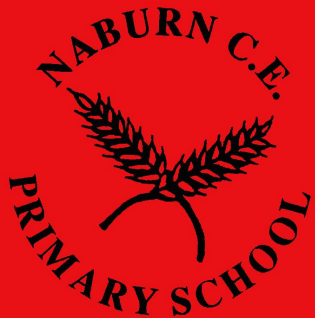


Finances

This is the biggest single project at school for 140 years

In February, the planners challenged us to find a better and more versatile project

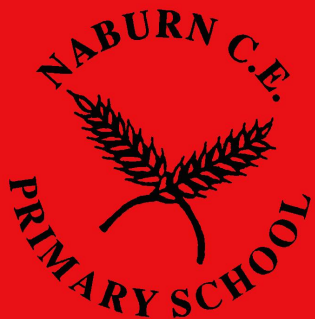
The building cost has risen from around £125,000 to a minimum of £260,000



What will the mezzanine cost?

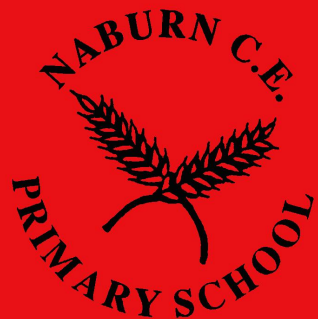
The following amounts are provisional and may change

■ Build cost (inc contingency)	£225k
■ Fees	£35k
■ Fit out	£30k
■ Increased running costs during build	£10k
■ TOTAL	£300k



How to fund?

- By March, the school will have reserves of £83k
- The original grant has been transferred £45k
- The grant from Extended Schools Agenda £100k
- Accelerated devolved capital
 - Up to 3 years at £14k pa £42k
- TOTAL £270k



This leaves us short by £30,000

Fund raising

- 90% of the project cost has come from the Govt and CoYC
- The funding gap is roughly equivalent to the cost of fitting out the enlarged space
- BUT the project cannot proceed unless we are satisfied it can be fully funded
- We have about 12 months to close the gap
- Governors consider that all the key stakeholders should now have their say

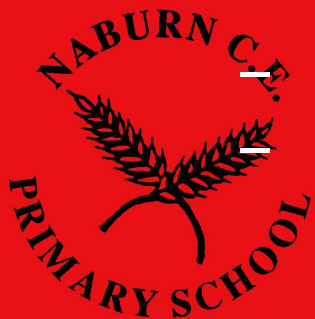


Stakeholders

The possible sources of funding are varied but made more difficult by current economic conditions.

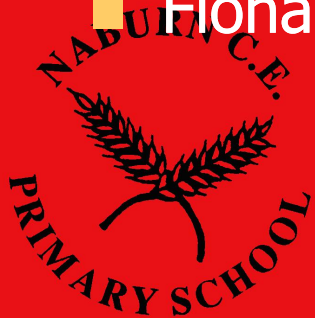
Sources of support are:

- You, who care for our children's future
- The school itself (children and staff)
- The PTA
- The villages in the catchment
- Companies and Charities
- Inland Revenue
- The Church



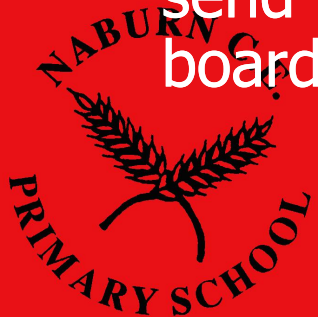
How will it work?

- There is a sub-committee of the Governing Body appointed to manage the whole fund-raising activity
- Comprises Juliette Pemberton, Nicola Stephenson-Barr, Phil Press and John Page
- Please come to us (via the school) with all your ideas
- Fiona Phillips (Chair of Finance) has agreed to act as the independent Treasurer, accounting for the funds raised
- Fiona is to arrange for the fund to have charitable status



No such thing as a free glass of wine.....

- Lots of really good ideas were produced on the night, varying from the sophisticated to the outrageous, from clever to completely daft. Well done everyone
- Please send more ideas to us via the school
- We'd like to issue a periodic newsletter, showing progress and future events
- If you give us your e-mail (and your real name), we'll send it to you - or you can read it on the school notice board



THANK YOU

- Projects such as this have a lasting impact
- In 1872, parents like you, voted to build a whole school – without any state aid
- Both this and future generations of local children will have their education enhanced by our collective ability to succeed

